

TPBO-02

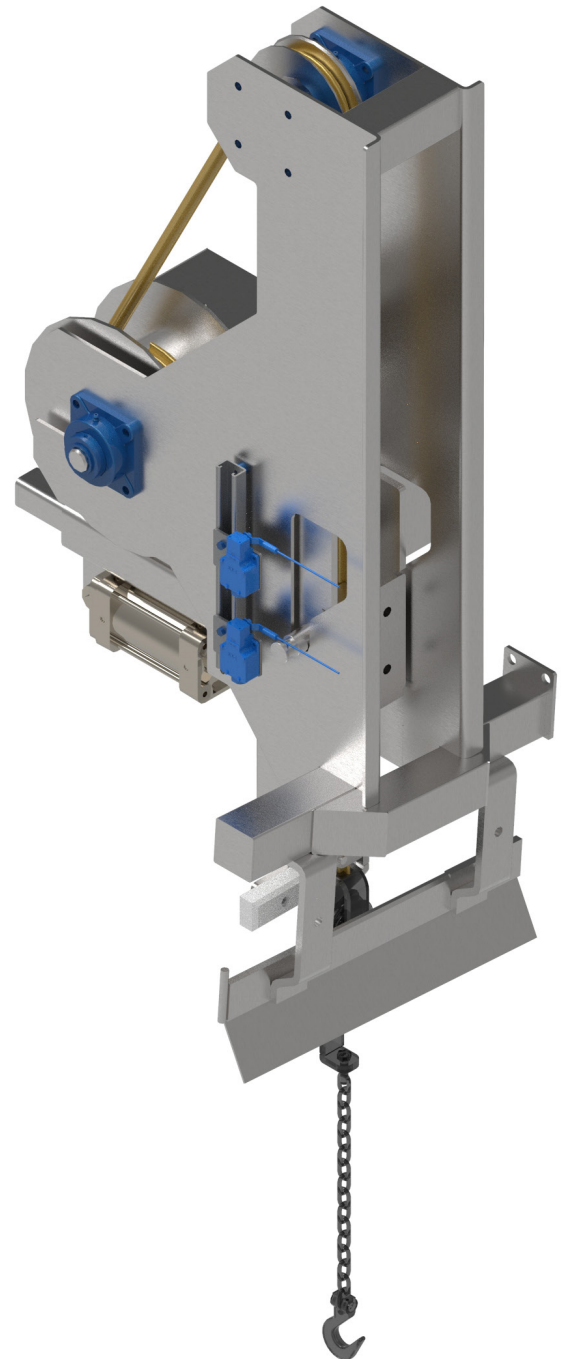
— POSITIONING WINCH

This positioning winch can be used with different species. This solid and compact winch allows a fast and efficient use, and it includes chains and secure hooks. Capacity of 1000 pounds.

- Built with 304 stainless steel
- Electric motor
- Mechanical components for food processing
- Electric control
- Pneumatic roll-off positioning pusher

AVAILABLE OPTIONS:

- Support structure
- Adapted rail system
- Full Automation



LACAL

FOLLOW US



WEBSITE
LACAL.CA

TELEPHONE NUMBER
819 364-3229

TOLL FREE NUMBER
1 888 364-3229

EMAIL
INFO@LACAL.CA